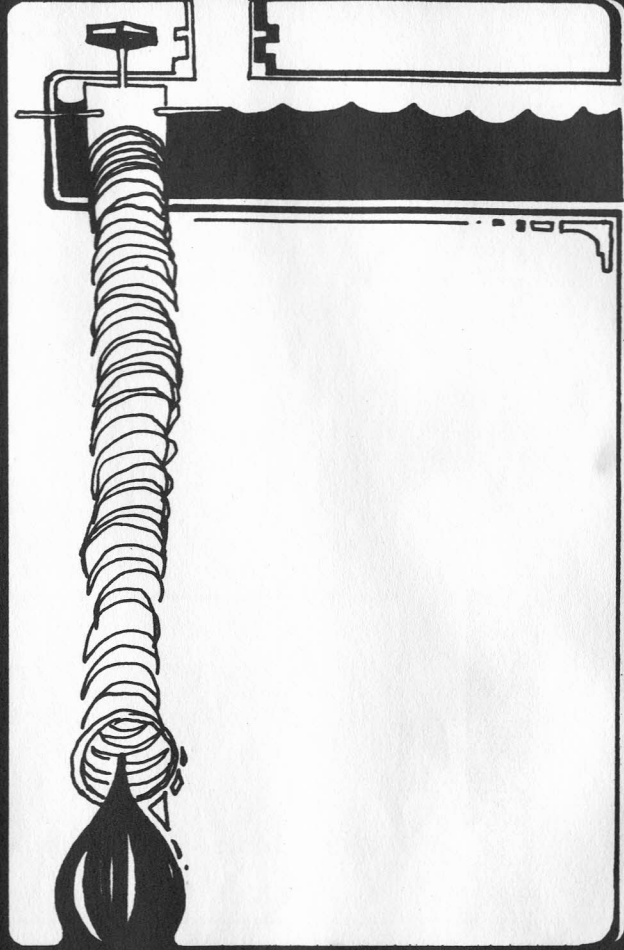


6

**DRAINAGE SYSTEM**





Your Airstream is equipped with a Drain, Waste and Vent system similar to the one in your home or apartment. It is also equipped with a waste holding tank for sewage which permits use of the toilet for several days away from disposal facilities. The waste water from the sink, the shower, bath and lavatory all drain through the same outlet as the waste tank, so you will need to make only one connection when hooking up in a trailer park.

The waste holding tank is made of seamless molded plastic completely free from corrosion problems, with a specially designed dump valve for trouble-free operation. When the toilet will no longer drain, the tank is full and must be emptied . . . watch this closely because when the tank is full the sewage cannot be emptied from the toilet bowl. To empty tank, attach sewer hose by pressing the bayonet-fitting onto the dump-valve outlet and rotate clockwise until it feels solid and secure. Attach the outlet end of the hose to the sewage outlet making certain that the hose is positioned so that it will drain completely. Pull up the dump valve handle as far as it will go and wait until the tank is drained. Close the dump valve and refill the tank with from 5 to 10 gallons of clean water and repeat the operation to insure that all paper and waste material has been flushed out. The sewer hose is stored in a compartment between the bumper and rear of trailer body. We recommend that you rinse out the sewer line before storing. A convenient fitting, for refilling or flushing tank, is located at the right side of the One-Stop service center. Be sure to replace the cap after using this fitting.

**If you are moving on, place a small amount of clean water in your tank with some commercial cleaner, such as Pink Magic (available through the Wally Byam Stores), so that it will slosh around and clean the tank while you are driving.**

## HOW TO USE THE SYSTEM WHEN CONNECTED TO A SEWER LINE.

### 1. Use The Toilet On Automatic Flush.

The mechanism is designed to partially refill the bowl after each use with clean, fresh water and is as sanitary as the toilet in your own home.

### 2. Keep The Holding Tank Dump Valve Closed.

Empty the tank every few days or whenever it becomes almost full. The idea is to send a large volume of sewage through the tank and drain hose at one time. This practice sets up a swirling action and high currents which floats the toilet paper and other solids completely away.

### 3. Avoid Accumulation of Solids.

It is very poor practice to keep the tank valve open or partially open when connected to a sewer or gopher hole. It is not like a home toilet where a large volume of water is used at each flush. There is usually not enough liquids to float all of the solids in a single flush. In time this builds up into trouble. The end result can be a disagreeable cleaning job. Should this ever happen, the best method of cleaning the tank is to close the valve, fill the tank about half full of water, and then tow the trailer for a few miles. The turbulence and surging of the water will usually dissolve the solids into suspension and the tank can be drained. You can add a little soap or tank deodorizer (Pink Magic), but nothing else. **(Do not add detergent.)**

## HOW TO USE THE SYSTEM WHEN PARKED WITHOUT A SEWER LINE CONNECTION.

### 1. AUTOMATIC FLUSH.

When traveling and you anticipate finding a dumping station, or being connected to a sewer line every few days, you can use the toilet on automatic flush if you wish. It

sewer connection  
self contained

DRAINAGE SYSTEM

9

self contained  
toilet & tank

DRAINAGE SYSTEM

uses very little water. The holding tank will provide space for the requirements of two adults for two to four days, or longer. As long as you are traveling in the United States or Canada you usually do not have to worry about your fresh water supply as it is readily available almost anywhere. Pressure or hand refill of your fresh water tank is seldom a problem. If you are traveling in areas where water is scarce, use the hand spray flush.

## 2. "WATER SAVER" HAND SPRAY FLUSH.

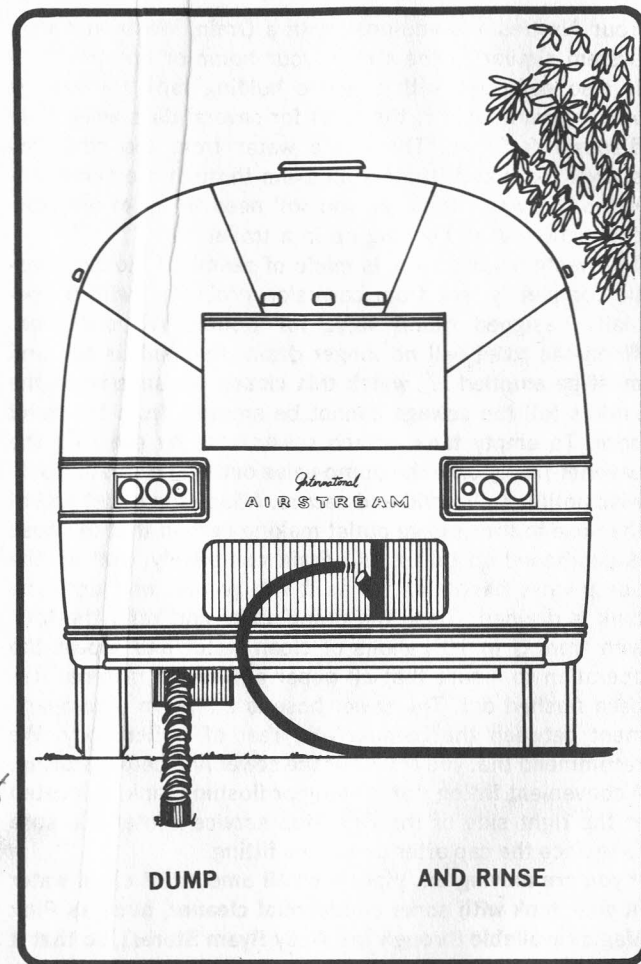
The proper use of the hand spray makes it possible to flush the toilet with a very minimum of water; thus stretching your holding tank over a long period of time. This makes it possible to stay a week (or weeks) in faraway places or crowded areas where there are no sewer line connections.

**2a. How To Flush For Urine Only.** The least possible use of water is accomplished by very slightly spraying the inside of the bowl, making its surface wet with clean fresh water. After use, the prewet bowl is very easily sprayed clean with less overall water than starting with a dry bowl.

**2b. How To Flush For Urine And Feces.** Spray just enough water in the dry bowl to provide for flotation of paper and solids. After use, rinse down the sides with the hand spray and empty the bowl. Hold the slide valve open and spray and rinse the lower surface. Even if it appears clean, give it a once over quick rinse. Then let up on the pedal. The toilet is now ready for the next use.

### THE TOILET.

The toilet in your Airstream is an Aqua-Magic Supreme designed expressly for travel trailers. It is warranted for two years against defects in materials and workmanship. The Aqua-Magic Supreme employs a completely new principle:



9

a sliding self-cleaning positive seal blade, which replaces the conventional clapper valve. Odors cannot escape from the holding tank into the interior of the trailer. No metal parts come in contact with the sewage; no mechanical adjustments are necessary; there are no cavities or clearance chambers to become fouled. The unit uses less than two quarts of water for automatic flush. A special feature of the Aqua-Magic Supreme is the second pedal attached to the main foot pedal. Depressing this pedal allows you to introduce water into the bowl through either the fill rim or hand spray without opening the slide valve.

#### **DIRECTIONS FOR AUTOMATIC FLUSH AND REFILL.**

1. Step on foot pedal. This opens slide valve and drops waste into holding tank.
2. Hold pedal down until water begins to swirl. This fills rim storage and rinses the bowl.
3. Release foot pedal. This closes slide valve blade and stops usage of fresh water. Bowl refills automatically.

#### **DIRECTIONS FOR "WATER SAVER" HAND SPRAY FLUSH.**

1. Hold hand spray in ready position over bowl.
2. Depress thumb button. This prepares for the blast of water used to clean the bowl.
3. Step on foot pedal. This dumps the contents of the bowl. It also sends fresh water through the hand spray.
4. Spray bowl clean.
5. Release foot pedal. Thus shuts off all flushing water flow.
6. If you wish to refill bowl with water for next use depress small foot pedal until water reaches desired level.

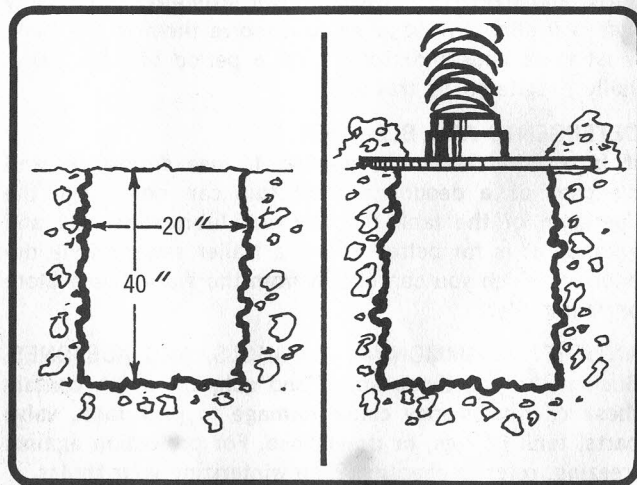
**NOTE:** If the thumb button is released before the foot pedal is released, water will automatically begin to flow

through the rim of the bowl. No water can enter the rim of the bowl as long as the thumb button is depressed.

#### **USING A "GOPHER HOLE."**

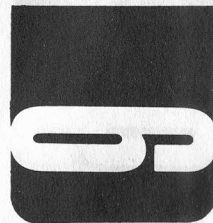
When you are parking in areas where it is permissible to do so, you may dig a "gopher hole" to dispose of the contents of your waste holding tank.

**Dig a "gopher hole" as follows:** Dig a hole from 18 to 20 inches in diameter and 40 inches deep, keeping the dirt you dig out in a large carton or box under your trailer. After the hole is dug, back your trailer up so that the toilet drain hose will drop straight down into the hole and so that the hole will not be where anyone could step into it by mistake. It is strongly recommended that you use an Airstream "gopher hole" cover . . . a plate which will cover the hole completely and that you can seal by piling some



toilet & tank

DRAINAGE SYSTEM



dirt around the edges (the hole in the plate will be just large enough to take the sealing ring you usually use to seal your sewer hose where it enters the trailer park sewage system). Drain your holding tank the night before you leave; the ground will absorb most of the contents overnight and it will be much easier to fill in just prior to departure next morning.

Beware that rain surface runoff water does not drain into your gopher hole and cause overflow. Mound some dirt around the hole to avert this.

#### THINGS NOT TO PUT INTO THE TOILET AND TANK.

##### FACIAL AND OTHER SIMILAR TISSUES.

Unlike toilet paper, nearly all facial tissues are impregnated and treated to give them wet strength. This quality makes it almost impossible to dissolve them in the tank. Most toilet papers dissolve after a period of time, especially if agitated by traveling.

##### DETERGENTS AND BLEACHES.

It is a fairly common practice to use detergents and bleaches as a deodorizer, but this can only harm the operation of the tank by removing lubricating oils and greases. It is far better to use a trailer sewage tank deodorizer which you can obtain from the Wally Byam Store or your dealer.

##### ANTIFREEZE, AMMONIAS, ALCOHOLS, AND ACETONES.

Such liquids as those above and solution which contain these chemicals may cause damage to your tank, valve parts, tank fittings, or drain hose. For protection against freezing, refer to chapter 12 on winterizing your trailer.

##### DISHWATER AND WASHWATER.

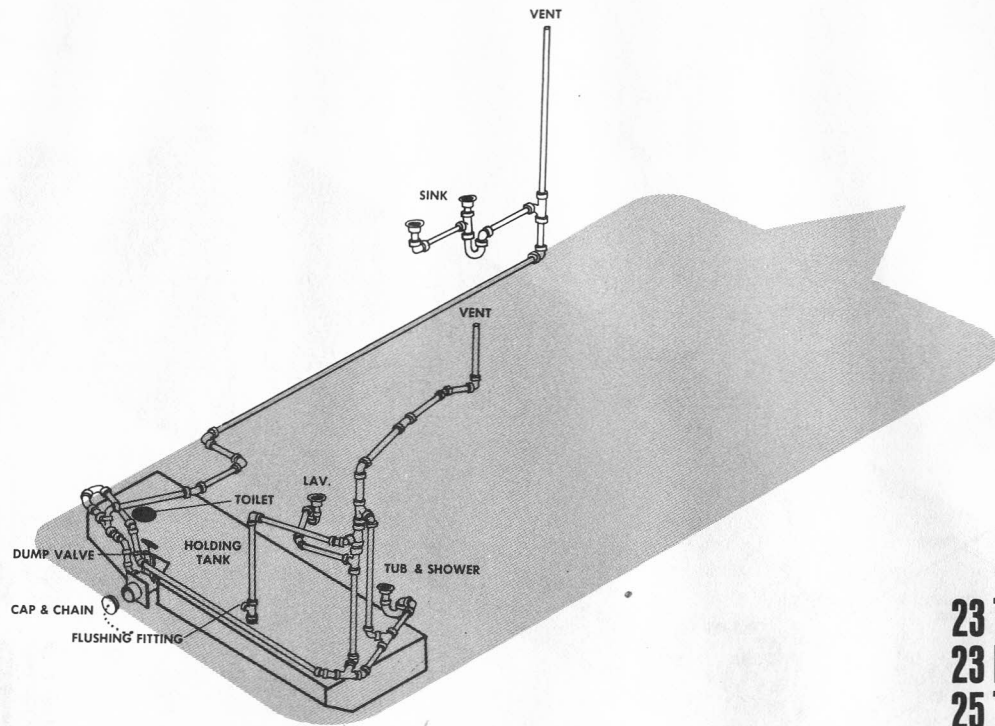
Nearly all kitchens and laundry soaps contain detergents which attack the lubricants, and should not be dumped into the tank. Some state and federal parks prohibit draining sink and bath water onto the ground, although it is often done in the wilderness.

Although we do not recommend the following practice for reasons stated above, in an emergency, you may empty waste water from the sink and lavatory into your waste holding tank instead of allowing it to drain onto the ground. To empty waste water into the waste holding tank, open the dump valve while keeping the sewage line drain cap on. Waste water will automatically back up into the tank. **Note:** Water conservation must be practiced as holding tank will fill rapidly. After you have been draining waste water into the holding tank and wish to drain the holding tank, place a bucket under drain outlet, **close the tank dump valve** and remove the drain outlet cover cap. This will drain the section of pipe between the cap and the valve and any adjacent drainage lines that might have filled with waste water. Next, drain the holding tank following the instructions at the beginning of this chapter.

While holding tank is draining we recommend you flush all drain lines by running water into the tub/shower, lavatory and sink.

The drainage system schematic for your particular model Airstream is illustrated on one of the following pages. We suggest that you cross out the schematics which do not apply to your Airstream to insure future reference to the proper schematic.

For capacities of holding tanks, refer to chapter 15.



23 T  
 23 D  
 25 T  
 25 D  
 27 T (L.Y.)  
 27 T (INTL.)

drainage system diagram

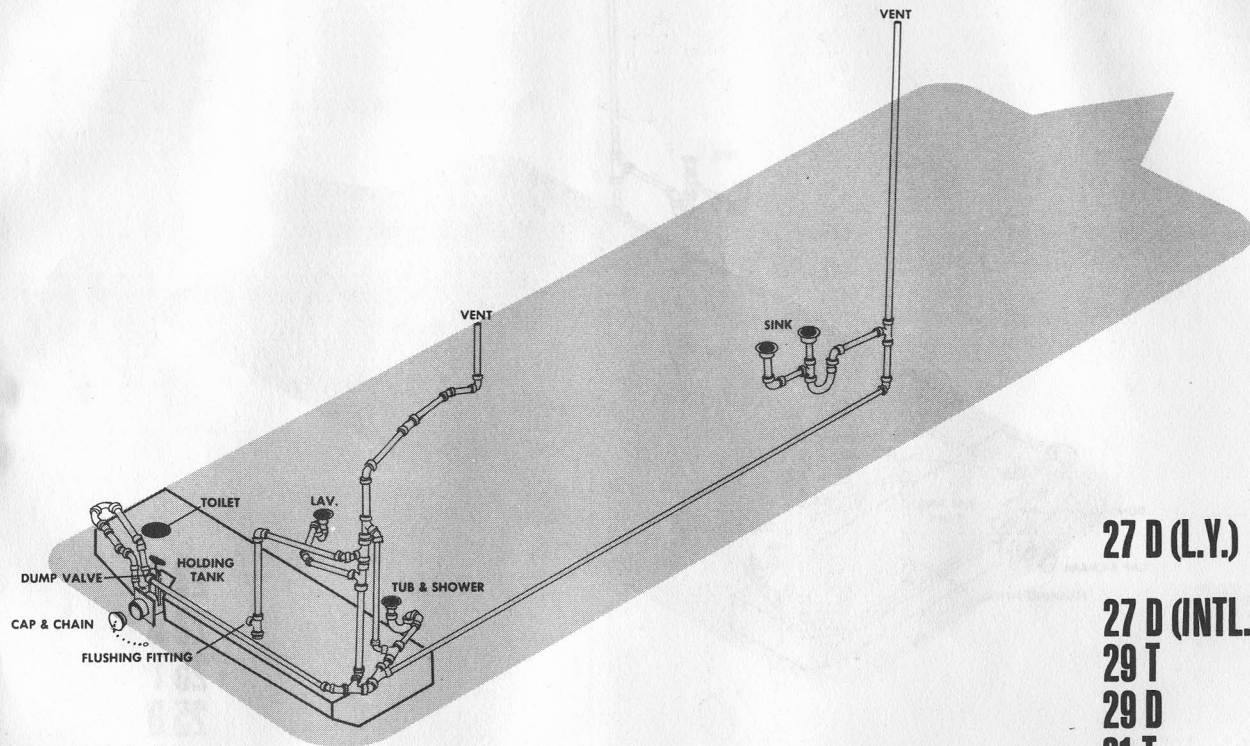
**DRAINAGE SYSTEM**





## DRAINAGE SYSTEM

drainage system diagram



*This*

27 D (L.V.)

27 D (INTL.)

29 T

29 D

31 T

31 D